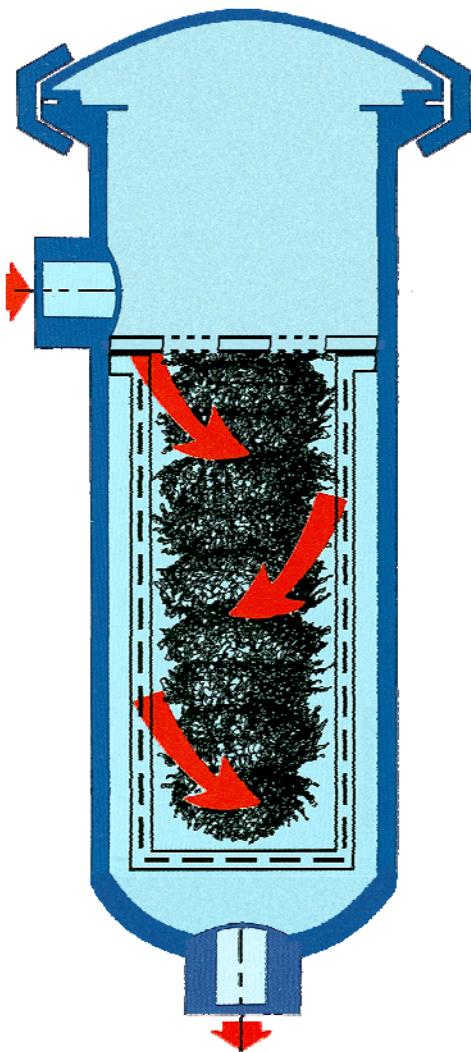




# FLUXA

Fluxa V.le A. De Gasperi, 88/B-20017 Mazzo di Rho (MI)  
 Filtri Tel. 0293959.1 (15 linee)  
 S.p.A. Fax 02.93959.400/440/470  
 e-mail: info@fluxafiltri.com - www.fluxafiltri.com



The magnetic filters are fitted with vertically arranged filter candles consisting of powerful permanent magnets, with alternating positive and negative impulses.

These magnets are housed in a grade 316L stainless steel sheath. The liquid or gas to be filtered is channelled in the optimum manner amongst the filter candles by means of a guide tube. Thus the "magnetic" contaminant particles to be removed are forced through several magnetic fields and, being "magnetised" are then retained by the filter candles. This result is particularly impressive in the case of "magnetic" sludges (particles from mechanical wear or oxides). The impulses create heavy particulate aggregates which adhere to the filter candles. Applying this technique it is possible to retain 99,99% of magnetic particles over 0.5 microns (depending on the velocity and viscosity of the liquid), without any increase in pressure drop or replacement of the filter element. However, a large amount of non-magnetic particles can be retained as they become trapped amongst the magnetic particles. A considerable weight of particles is retained-approximately 1.5 kg for each metre of filter candle.

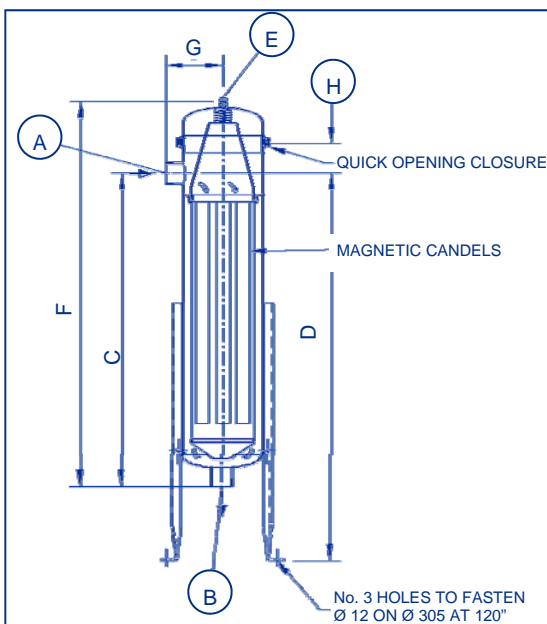
### Standard filters series FH and SC

These filters combine the filtration by filter bags or by filter baskets with the action of groups of magnetic candles lodged within the bags or baskets. Connections are 2" and 3", threaded or flanged. Filters can be supplied according to the requirement of client, following directives PED 97/23/EC, ASME VIII-Div. 1, or special.

### Typical uses:

- > Natural gas, liquid gas, compressed air
- > Fuel, petrol, gas oil, fuel oil, jet fuel
- > Chemicals
- > Lube oils, hydraulic oils
- > Painting by dipping-cataphoresis
- > Cleaning solutions
- > Industrial process water
- > Waters of heating systems
- > Protection of motors
- > Pumps, lathes etc.

MODELS	Stainless Steel	
	FH... C11	FH... C12
Nominal flow rate m <sup>3</sup> /h*	20	30
Max working pressure	8 bar	8 bar
No of candles	4	4
Length of candles mm.	300	600
Dimensions of basket Ø mm. Length mm.	180 420	180 750
Threaded connections **	2" GAS M / 3" GAS M	
Weight approx kg	26	31

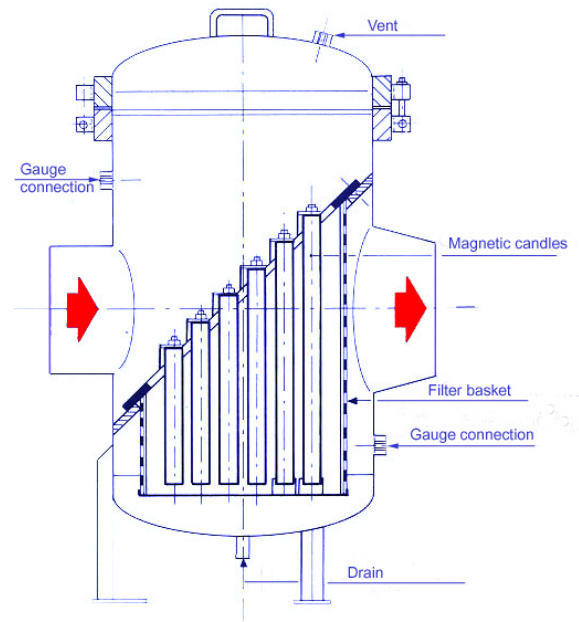


MODEL	MATERIAL	DIMENSIONI mm							
		A-B	C	D	E	F	G	H	OD
FH ... C11	AISI 304, AISI 316/L	Ø 2" GAS M	515	865 variable	Ø ¼" GAS F	705	160	450	219
FH ... C12	AISI 304, AISI 316/L			1055 variable		1045	160	750	219
SC ... C11	AISI 304, AISI 316/L			1035 variable		635	155	450	219
SC ... C12	AISI 304, AISI 316/L			1260 variable		975	155	750	219

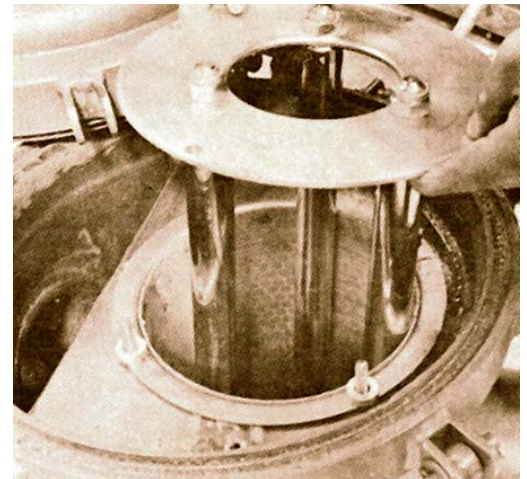
\* Housing's flow rate without filter elements referred to liquids with viscosity 1 cSt.  
 Housing's flow rate has to be calculated in relation with filter element and process data.  
 \*\* Available with connections different from those above mentioned.



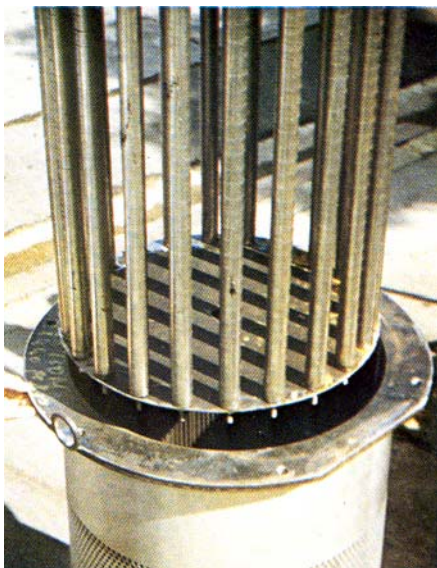
Magnetic filter



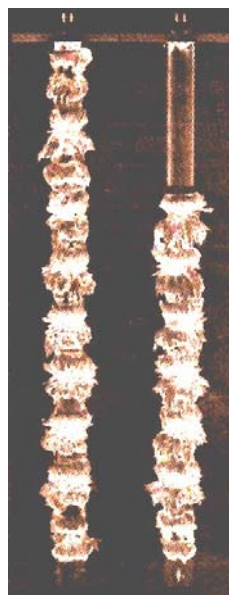
In-line basket filter serie PBM



Magnetic filter with wire-mesh basket



Set of magnetic candles



Magnetic candles showing capture of iron particles



Inside view of the filter