

Housing SJ

SJ cartridge housings are renowned for their high quality design and manufacture. They are suitable for a wide range of standard Single Open End junior cartridges containing either pleated depth media or membranes. Therefore housings can be used in a wide variety of final and pre-filter applications where liquids or gases need processing.

Product Features:

- * Quick release Vee Clamp Closure for easy opening
- * Lightweight, high specification investment cast head
- * Available in 316L stainless steel or Alloy 22 for maximum compatibility
- * Rated to 10 bar g liquid, 10 bar g gas and full vacuum
- * Can be used in temperatures from -10°C up to 150°C
- * PED Compliant to Sound Engineering Practice
- * Full traceability on all parts, material certification packs available

Applications:

- * Small to medium sized batch processes
- * Product development and pilot plant applications
- * Vessel vent
- * Compressed air and gas lines
- * General low medium flow rates applications.

Feature and Benefits

- * Investment Cast head (avoids the porosity & inclusion problems associated with lower quality sand castings)
- * Integral vent or drain socket to aid efficient filter changeout complete with PTFE washer
- * Every housing is etched with a serial number for full traceability
- * Full housing customisation service available
- * Available in both 316L Stainless Steel and C22 Hastelloy
- * CE marked



Technical Data

Maximum Operating Conditions

Pressure Range: Liquid: FV / 10 bar g
Gas: FV / 10 bar g

Temperature Range: -10°C / 150°C

Materials of Construction

Body and Closure: 316L St.Steel

Clamp: 304 St.Steel

Seal: Ethylene Propylene

Finish

Vessel: Externally polished sump, electropolished head

Connections

Inlet/Outlet: 1/2" BSPF

Vent/Drain: 1/4" BSPF with Plug

Seal: Ethylene Propylene

Model	Dimensions					Volume	Dry
	A	B	C	D	E	(Litres)	Weight
51050JVNO5B1DE	203	-	-	76	135	0.43	2.3

PED Status: Compliant with 97/23/EC

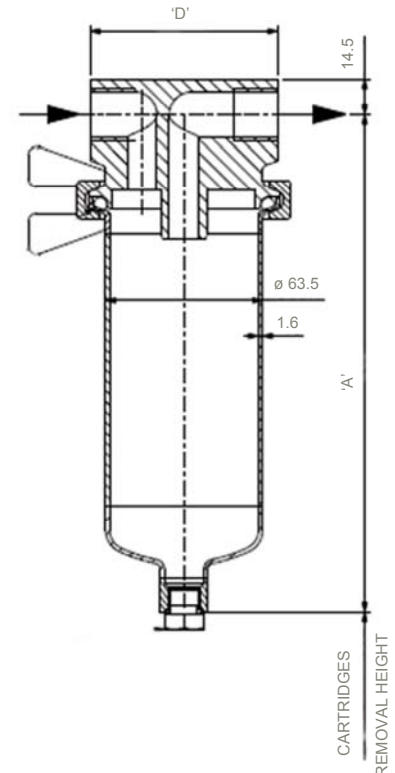
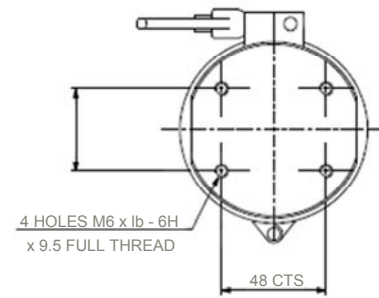
Fluid Groups: Gas Group 1 + 2
Liquids Group 1 + 2

Marking: CE

Exceptions: Group 1 liquids - Explosive

ATEX: Compliant 94/9/EC, level CE Ex II 2 GD c X

Technical drawings for each individual housing showing dimensions, volume, weights, maximum temperatures and design pressures available on request.



ORDERING GUIDE

No of Stacs 01 - 1 Stacs	Cartridge End Cap Style J = Junior	Mounting N - None E - Bracket	Connection Type B - BSPF	Finish D - Externally polished sump, electropolished head
Cartridge Length O - Single 5"	Closure V - Vee Clamp	Connection Size 05 - 1/2"	Materials 1 - 316 st.st. (L Grade)	Seal E - EPDM F - FEP/Silicone S - Silicone V - Viton

Example. 51010JVNO5B1DE = SJ, 1 x Junior cartridge, Vee Clamp closure, No mounting, Y" BSPF connections, St.Steel construction with EPDM gaskets, externally

C-18-00-UK



UK Office:

Envirogen Group
Unit 14a Bromyard Road
Trading Estate
Bromyard Road, Ledbury
Herefordshire HR8 1NS
Tel: +44 (0) 1531 636328
E: info@envirogen.com
www.envirogen.com



Italian Office:

Envirogen Group Italy S.p.A
Viale De GASPERI, 88/B
20017 Mazzo di Rho Milano
Tel: +39 (0)2 93959.1
E: info.it@envirogen.com
www.envirogen.com



USA Office:

Envirogen Technologies
Two Kingwood Place
700 Rockmad Dr. Suite 105
Kingwood, TX 7739
Tel: +1 877.312.8950
E: info@envirogen.com
www.envirogen.com